

X100[®] ALLOY SCREW PIN LONG REACH SHACKLE

NEW PRODUCT BY ADVANTAGE

APPROVED FOR OVERHEAD LIFTING

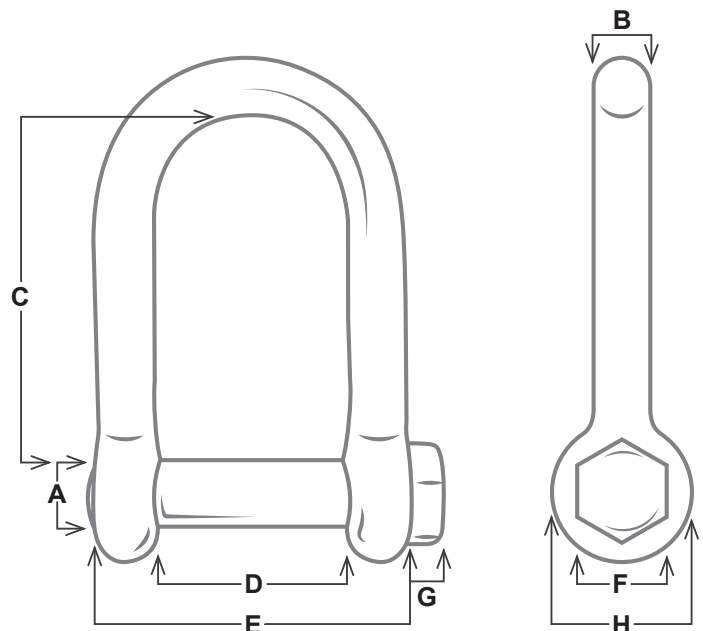


- Approved for Overhead Lifting
- 100% Forged Alloy Steel
- Markings: X100 Brand Size, Working Load Limit, Traceability
- Extended Bow: Designed for use in construction applications where a longer reach is needed to attach to Pick Points
- Easily recognizable X100 Orange Powder Coated which provides protection from corrosion but enables full exposure of identification markings
- The load should be evenly distributed over the entire pin to achieve the full Working Load Limit – 80% minimum coverage
- Long Reach Shackles should not be Side Loaded

STOCK NUMBER	SIZE	WORKING LOAD LIMIT (TONS)	DIMENSIONS								WEIGHT/PIECE (LBS.)
			A	B	C	D	E	F	G	H	
XLRSP625	5/8"	3.5	0.75"	0.63"	4.00"	2.25"	3.55"	1.06"	0.35"	1.58"	2
XLRSP750	3/4"	5	0.88"	0.75"	5.00"	2.75"	4.25"	1.25"	0.39"	1.81"	3.2
XLRSP100	1"	9.5	1.00"	1.00"	5.50"	3.25"	5.25"	1.37"	0.47"	2.38"	6.2
XLRSP1250	1-1/4"	14	1.38"	1.25"	6.25"	3.88"	6.37"	1.94"	0.59"	3.06"	12
XLRSP1500	1-1/2"	17	1.50"	1.50"	7.00"	4.50"	7.48"	2.16"	0.66"	3.50"	19.2
XLRSP1750	1-3/4"	25	2.00"	1.75"	8.00"	5.25"	8.75"	2.70"	0.80"	4.00"	30.4

Ultimate load is 5 times the Working Load Limit.

WLL, SIZE, TRACEABILITY



DO NOT EXCEED WORKING LOAD LIMIT.

X100 by ADVANTAGE | www.AdvantageSales.biz | 800-216-2183

X100[®] ALLOY SAFETY BOLT LONG REACH SHACKLE

NEW PRODUCT BY ADVANTAGE

APPROVED FOR OVERHEAD LIFTING

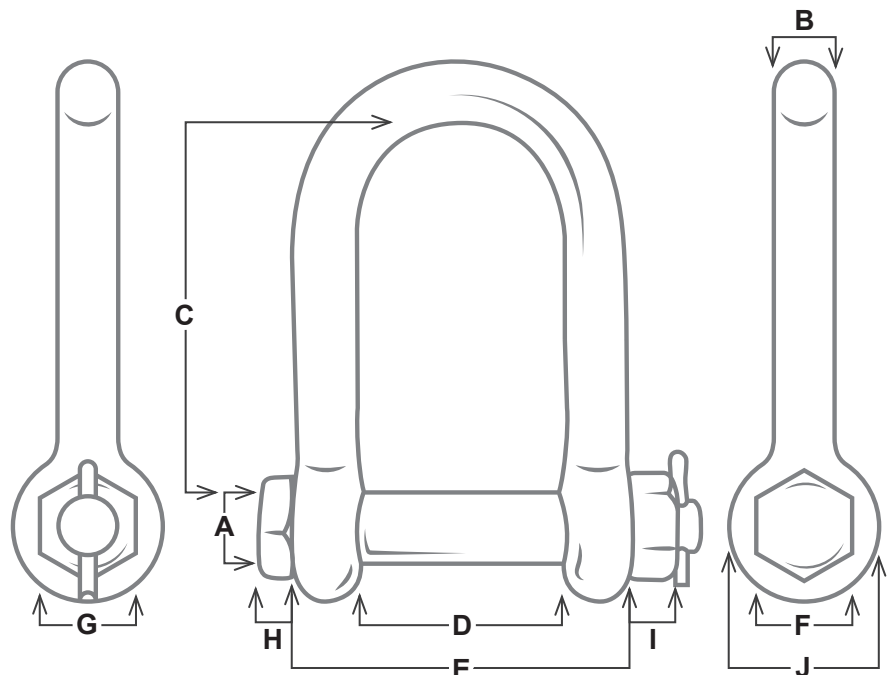


- Approved for Overhead Lifting
- 100% Forged Alloy Steel
- Markings: X100 Brand Size, Working Load Limit, Traceability
- Extended Bow: Designed for use in construction applications where a longer reach is needed to attach to Pick Points
- Easily recognizable X100 Orange Powder Coated which provides protection from corrosion but enables full exposure of identification markings
- The load should be evenly distributed over the entire pin to achieve the full Working Load Limit – 80% minimum coverage
- Long Reach Shackles should not be Side Loaded

STOCK NUMBER	SIZE	WORKING LOAD LIMIT (TONS)	DIMENSIONS										WEIGHT/PIECE (LBS.)
			A	B	C	D	E	F	G	H	I	J	
XLRSB625	5/8"	3.5	0.75"	0.63"	4.00"	2.25"	3.55"	1.06"	1.02"	0.35"	0.51"	1.58"	2.2
XLRSB750	3/4"	5	0.88"	0.75"	5.00"	2.75"	4.25"	1.25"	1.22"	0.39"	0.59"	1.81"	3.6
XLRSB100	1"	9.5	1.00"	1.00"	5.50"	3.25"	5.25"	1.37"	1.33"	0.47"	0.65"	2.38"	6.6
XLRSB1250	1-1/4"	14	1.38"	1.25"	6.25"	3.88"	6.37"	1.94"	1.92"	0.59"	0.73"	3.06"	12.8
XLRSB1500	1-1/2"	17	1.50"	1.50"	7.00"	4.50"	7.48"	2.16"	2.12"	0.66"	0.82"	3.50"	19.8
XLRSB1750	1-3/4"	25	2.00"	1.75"	8.00"	5.25"	8.75"	2.70"	2.67"	0.80"	1.05"	4.00"	32.2

Ultimate load is 5 times the Working Load Limit.

WLL, SIZE, TRACEABILITY



DO NOT EXCEED WORKING LOAD LIMIT.

X100 by ADVANTAGE | www.AdvantageSales.biz | 800-216-2183